

Navis[®] Optical Management System (MS)



Centralize multiple network management functions with one system. Simplify your SDH, SONET and optical Ethernet transport network operations while evolving to next-generation, service-oriented networks.

Benefits

- Provides comprehensive, integrated network management from a single system
- Streamlines network complexity while enhancing efficiency
- Speeds introduction of services with simplified provisioning
- Improves customer satisfaction and retention
- Offers secure and reliable network management
- Helps reduce operational costs using dependable, scalable technology



Provides comprehensive, integrated network management from a single system

Navis® Optical Management System (MS) is advanced network management software, designed specifically to manage SDH, SONET, optical, ASTN/GMPLS-enabled, and Ethernet-capable transport networks. It can seamlessly evolve existing management systems, so you can benefit from the opportunities offered by next-generation, service-oriented networks. Navis® Optical MS provides low-risk, standards-compliant development of existing network management solutions, enabling you to meet your evolving business needs.

The core product offers extended element management functionality. Optional value-added modules can enhance the basic core offer to extend core system functionality. These additional modules give you the versatility to deploy and configure applications to suit your network management needs.

Optional modules include:

- Service provisioning – process automation helps reduce provisioning cost by reducing manual errors and provisioning time
 - layer 2 Ethernet provisioning
 - intelligent routing
- Service assurance – rapid identification of services impacted by network outages helps reduce service downtime
 - fault correlation
 - performance management
- Interfaces – additional interfaces for integrating into third party operating software systems
 - TMF 814 NB interface

The system is scalable, enabling cost-effective deployment into either new or existing networks.

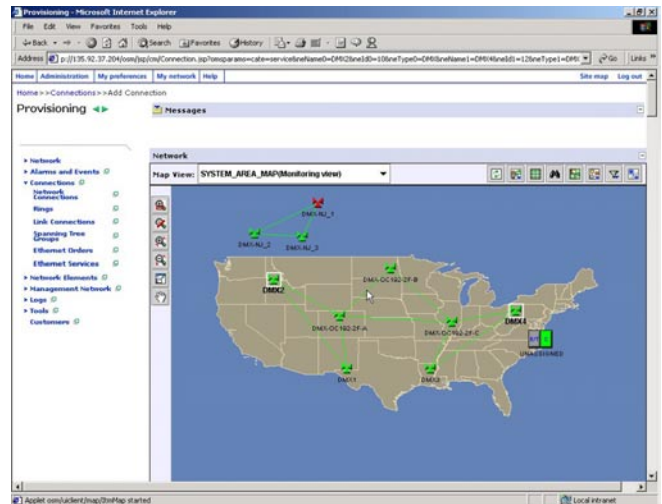
Streamlines network complexity while enhancing efficiency

The core Navis® Optical MS product provides enhanced element management functionality with simple point-and-click provisioning. It can help reduce operations complexity through remote and centralized Network Element (NE) administration, thereby removing the need for local access to configure and activate NEs.

Navis® Optical MS can also help your network run more effectively through operational efficiencies including:

- configuration management
- fault management
- performance management
- security management functions

Navis® Optical MS uses an intuitive, consistent and easy-to-use web-based GUI. Its menu-driven operations and on-line help functions simplify operation for users performing any task.



The map-driven web-based GUI simplifies operations and allows quick transitions to and from different areas of network management.

Speeds introduction of services with simplified provisioning

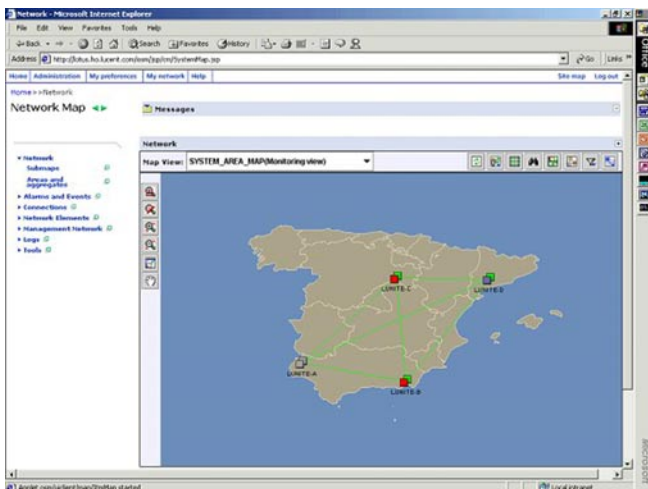
Navis® Optical MS offers many features to help simplify and speed service provisioning operations. It can reduce operating costs by automating service provisioning across multiple NEs which can prevent errors associated with manual provisioning. Using automatic discovery and synchronization of network inventory, Navis® Optical MS gives you the ability to design and implement route designs using accurate and up-to-date network information. In the case of a failed link or connection, services are automatically rerouted due to the fast mesh restoration capabilities of ASTN/GMPLS networks.

With fully integrated management of multiple technologies, you can design and activate services across multiple networks from a single system. Provisioning management for unswitched and switched Ethernet services enables you to take advantage of new revenue opportunities afforded by advanced Ethernet capabilities.

Improves customer satisfaction and retention

Navis® Optical MS offers rapid, automated service assurance capabilities that allow you to reduce the expenses involved in maintaining services on your network. It enables fast, accurate identification of the root cause of network outages with detailed analysis. Rapid correlation of faults to services enables you to reduce the impact of network failure on customer services.

Performance monitoring on ports associated with paths or circuits allows the detection of abnormal conditions even before services are affected.



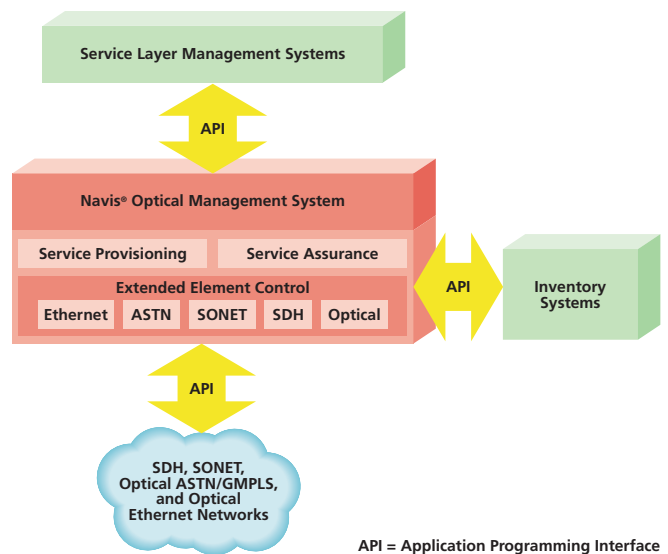
The network map is automatically updated with alarm information as alarms are received from the network.

Offers secure and reliable network management

Navis® Optical MS supports industry-standard security functions. The base security layer of Navis® Optical MS is the operating system platform, which provides a secure computing environment. The middle layer

supplies application-specific security management functions, such as executing user work-function permissions. The top layer provides GUI-based access for the security administrator to manage application-level security functions.

Another form of security is efficient data backup and recovery. Navis Optical MS provides remote network element memory backup and restoration in the event of a catastrophic failure. A suite of high-availability options offers additional system protection against power interruptions or disk failures. Available options include uninterruptible power supply (UPS), mirrored disks and geographic redundancy.



A modular design and industry-standard interfaces enable easy deployment into existing optical networks.

Helps reduce operational costs using proven, scalable technology

Navis® Optical MS is built on proven technology used in systems throughout the world. Since it is designed as a single system capable of managing both current and next-generation networks, it can help reduce your operating and capital costs.

Navis® Optical MS is scalable so it upgrades and complements installed Lucent systems. It is also a management solution for next-generation networks and can easily be integrated into your current network operations structure. With scalable and standard interfaces and protocols, Navis® Optical MS can help meet your specific network needs.

Features & Benefits

- Multiple network management functions within a single system to reduce your operating costs
- Complete end-to-end service provisioning with simple point-and-click automated operation
- Fast and accurate detection and diagnosis of failed equipment and affected services
- System scalability allows your management system to grow as your network grows.
- Configuration management, fault management, performance management and security management functions to help your network run more effectively and efficiently
- Automatic discovery and synchronization of network inventory database to ensure accurate and up-to-date resource information
- Menu-driven operations and an on-line help feature to simplify operation
- Industry-standard security functions, providing three layers of protection
- Remote network element memory backup features, making restoration easier in the event of catastrophic failure

To learn more about our comprehensive portfolio, please contact your Lucent Technologies Sales Representative or call +800 11223333 (Europe wide Freephone) or +32 70 22 20 52.

Visit our web site at <http://www.lucent.com>.

This document is for planning purposes only, and is not intended to modify or supplement any Lucent Technologies specifications or warranties relating to these products or services. The publication of information in this document does not imply freedom from patent or other protective rights of Lucent Technologies or others.

Navis is a registered trademarks of Lucent Technologies Inc.

Copyright © 2003
Lucent Technologies Inc.
All rights reserved

ONG v1.0403

