

# UH11-0020LC/GU1500

■ AC Power Solution for  
Business-Critical Continuity

## Outdoor UPS 2kVA

### Introduction

The compact outdoor 2KVA UPS is engineered to withstand harsh outdoor environments and provide clean and reliable backup power.

### Typical Application

- Outdoor Base Station
- Traffic control

### Main Features

- Natural cooling - no need to replace fans providing higher system reliability
- Dual conversion - complete input/output isolation
- Full digital control - enables application in a wide range of environments Superior surge and lightning protection
- IP55 protection level for application in harsh environments
- Very wide input voltage window
- Auto start up function when mains recovered
- Temperature compensation during battery charging - provides maximum battery service life
- 3 mounting options available (Wall/Pole/Floor)
- Optional internal heater for battery protection in cold areas
- Separate power module and battery enclosure - higher system flexibility
- Expandable charger to shorten the recovery time of long backup system

### Value Added Options

- Additional charger, 6A each
- 20kA surge suppressor
- Dry contact communication kit
- Sunshade
- Mounting kit
- Battery cabinet for 65AH or 100AH battery

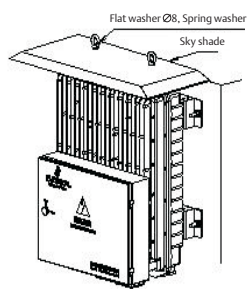


## UH11-0020LC/GU1500

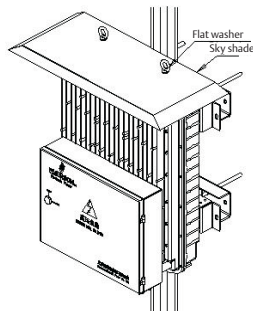
Capacity	2000VA/1200W, temp <10℃	1500VA/1050W, temp >10℃
Model Name	UH11-0020LC/GU1500	
INPUT	Rated Voltage	220Vac
	Voltage Range	150-310Vac
	Frequency	45 ~ 65Hz
	Power Factor	> 0.98
OUTPUT	PF	0.6 temp<5℃ 0.7 temp>10℃
	Normal Voltage	220Vac±3%
	Frequency	50Hz
	Frequency Tracking Rate	≤1 Hz/s
	Inverter Overload Capability	105% -125%, 5 mins, > 125%, 20s,
	Peak Factor	3:1
	Bypass Voltage	150 ~ 310Vac
	Efficiency (Normal Mode)	>89%
	Efficiency (Battery Mode)	>87%
SHIFT TIME	Utility Failure	0ms
INSULATION	Insulation Resistance	> 2M Ω (500Vdc)
	Dielectric Strength	(Output to earth, Input to earth)2820Vdc, leakage current <3.5mA for 1min without arc or breakdown
ENVIRONMENT	Operation temperature	-40℃ to 55℃
	Storage temperature	-40℃ to 70℃
	Relative humidity	10%-100%
	Altitude	Under 4000m, over 4000m, de-rated,
	Protection Level	IP 55
Dimension & Weight	Noise	<40dB
	Dimension	485mmW × 263mmD × 615mmH
	Weight	Gross: 38Kg; Net: 36Kg



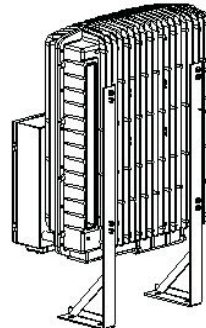
## Different Mounting Modes



Wall mounting



Pole mounting



Floor mounting

**Emerson Network Power.**  
The global leader in enabling  
business-critical continuity.

AC Power Systems  
Connectivity  
DC Power Systems

Embedded Power  
Inbound Power  
Integrated Cabinet Solutions

Outside Plant  
Precision Cooling  
Site Monitoring and Services

**Emerson Network Power Co., Ltd.**  
No. 1 Kefa Rd., Science & Industry Park  
Nanshan District 518057, Shenzhen, China  
Phone: +86-755-8601-0808  
Fax: +86-755-8601-0909  
www.emersonnetworkpower.com.cn  
www.emersonpower.com.cn

Emerson Network Power and the Emerson  
Network Power logo are trademarks and  
service marks of Emerson Electric Co.  
©2005 Emerson Electric Co.